

Product: POS55
 Product Size: 500mm(w)×1650mm(h)×350mm(d)
 Decoration Options:

left outside

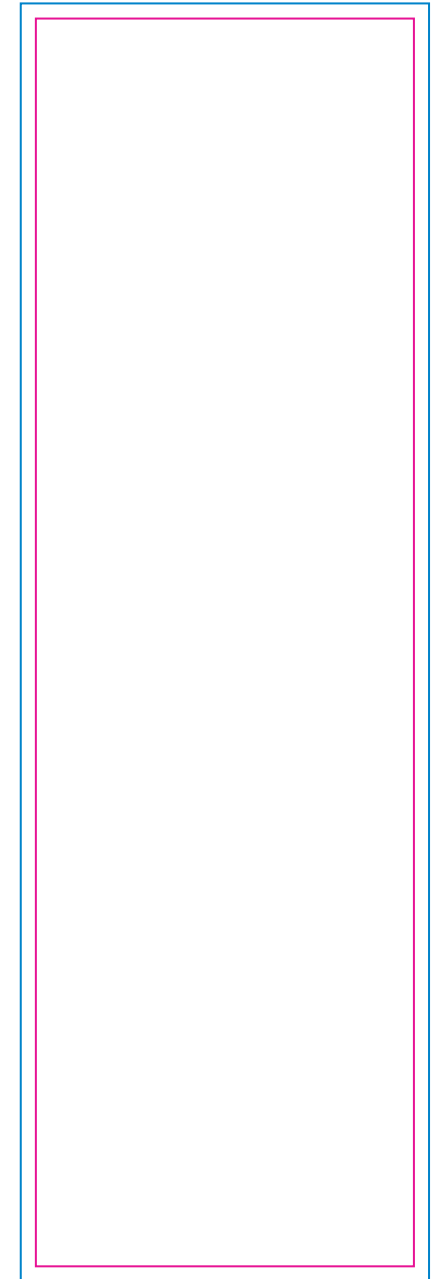
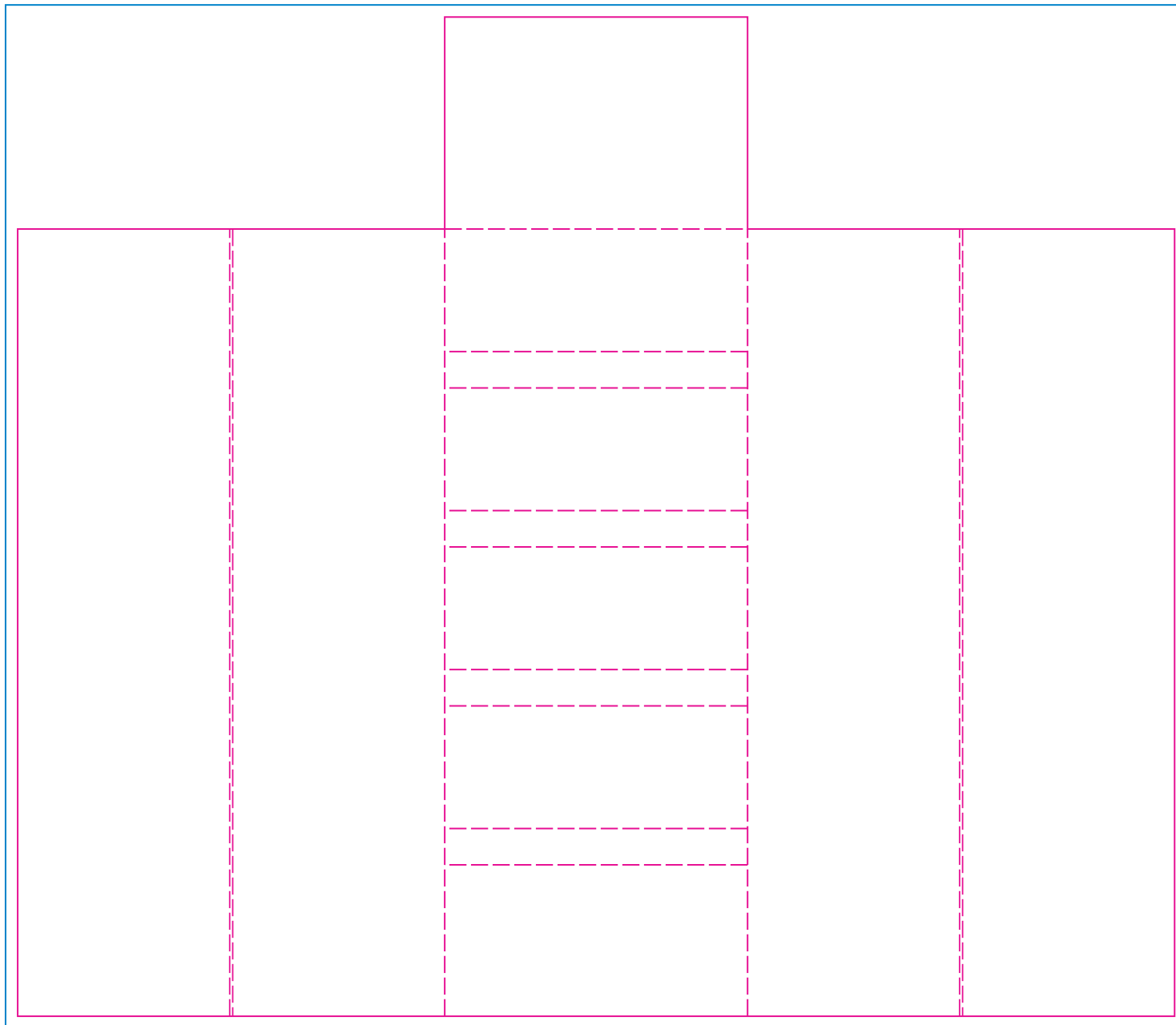
left inside

Front

right inside

right outside

Back



Print size:1910mm(w) x 1650mm(h)
 Shown at 10% actual size

Print size:500mm(w) x 1650mm(h)

The front panel:



Print size:500mm(w) x 250mm(h)

The front panel:



Print size:500mm(w) x 60mm(h)

— Knife line
 □ Bleed area

Surface Treatment: Glossy
 Matte Lamination